



Construction



Coffee area



Cooking area

Bilsen's Bistro

Turning an old bank building into a suburban bistro was the challenge faced by the operators of Bilsens Bistro. Fire & Ice Food Equipment worked with the client to design the kitchen, which needed to fit within a limited space, and supplied the equipment.

As with all projects the design stage was critical. With our initial base layout and 3D designs produced using Masterchef CAD software we had a good starting platform from where we could develop the plan; taking into account the most efficient workflow, ample and correct food storage, preparation spaces and hygiene areas.

Fire & Ice provided site project management assistance which included set-outs for the plinth areas and required utility services, assisting the builder where necessary.

Electrolux 900 Series Restaurant cooking equipment in a Monoblock format was utilised to make the best use of the small cooking area. The cooking block, designed to be bolted together to give a hairline finish, saves the chef time due to improved hygiene and easy cleaning.

An Electrolux pass through dishwasher provided an effective warewashing solution for another tight work space. Due to the low ceiling height a condensation hood with in-built fan was installed to extract the steam from this area.

The low concrete slab ceiling also meant that much thought needed to be put into the design of the cooking equipment ventilation system. A Double V island exhaust canopy in a low profile design was the best choice for the challenging application while at the same time complying with requirements of Australian standards.

A combination of Skope and Gram refrigeration provide the client with peace of mind that food is stored at the correct temperature and merchandise is displayed at its best.

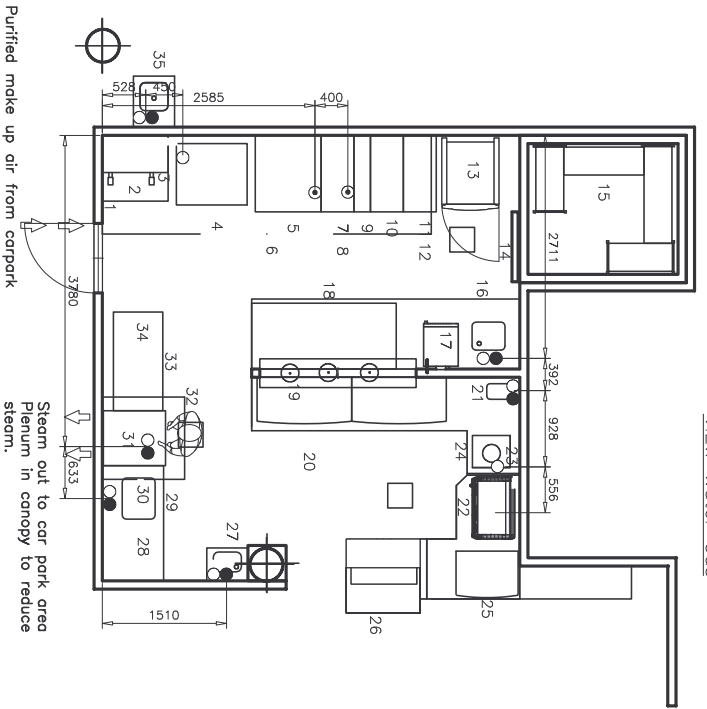
PO Box 8
Hamilton QLD 4006

Telephone: 0432 088 237
Facsimile: 07 3337 9817

Email: sales@fire-ice.com.au
Web: www.fire-ice.com.au

Scale 1:50

VIEW Water Gas



POS	Q.	DESCRIPTION	MODEL	DIMENSIONS MM
01 - KITCHEN				
1	1	CUSTOM STAINLESS STEEL BENCH WITH SHELVES	CUSTOM	800x 800x 1300
2	1	ELECT.SALAMANDER/GRILLER CLOSED ON 3 SIDES	WGL150	670x 380x 380
3	1	SALAMANDER WALL BRACKETS	CUSTOM	25x 450 450
4	1	ELECTRIC CONNECTION OVEN 6 GN 1/1	EGF61E	880x 746x 633
A	1	BASE FOR OVEN 6X1/1	CUSTOM	838x 625x 920
5	1	4-BURNER (10KW) GAS RANGE+OVEN 800 MM	ZB10CZP	800x 930x 850
6	1	STAINLESS STEEL WALL HOOD-FILTERS+LIGHTS	CUSTOM	4000x 1200x 400
7	1	GAS FRYTOP SMOOTH HORIZONTAL PLATE 400MM	ZFTTG/MSF	400x 930x 250
8	1	OPEN BASE CUPBOARD 400 MM	ZB8C1	400x 900x 600
9	1	WORKTOP 200 MM	ZW1T0	200x 930x 250
10	1	23.T. EL-FRYER-1 WELL+2 1/2 BASKETS	ZFRSET/SVEX	400x 930x 850
11	1	WORKTOP 400 MM	ZW1T1	400x 930x 250
12	1	OPEN BASE CUPBOARD 400 MM	ZB8C1	400x 900x 600
13	1	1 DOOR UPRIGHT STAINLESS STEEL FREEZER	PLUS 1600 CX	695x 876x 2010
14	1	COOL ROOM	CUSTOM	1790x 2029x 2400
15	1	ADJUSTABLE SHELVING	AXIS	18x 450x 1880
16	1	WORK TABLE W/L/H BOWL & UPSTAND 3280 MM	CUSTOM	3260x 850x 1200
A	1	MIXER TAP WITH SWIVEL SPOUT 3/4"	ENWARE	200x 345x 335
17	1	MICROWAVE OVEN	MW-1000	550x 450x 450
18	1	REFR. COUNTER, 3 DOORS, SALADETTE	PG400PREP-2	1799x 700x 900
19	1	SERVEY LEDGE WITH LUNE ADJ. HEAT LAMPS	BB7/80SS	1900x 350x 40
20	1	4-GLASS DOOR ST/STEEL REFRIG.	CUSTOM 1224	2620x 590x 1070
21	1	UNDERSLING SINK BOWL AND TAPSET	CUSTOM	300x 450x 200
22	1	2 GROUP ESPRESSO MACHINE	AMERICANO	800x 600x 520
23	1	COFFEE GRINDER	MOXA	200x 200x 400
24	1	AIR COOLED ICE CUBER 20KG/24H	ACM46	380x 460x 690
25	1	1-GLASS DOOR REFRIG.	ASC98	590x 590x 900
26	1	REFRIGERATED DISPLAY CABINET SQUARE GLASS	DSV0730	900x 730x 1358
27	1	WALL MOUNTED HAND WASH SINK + TAPSET	HMSWS	500x 400x 340
28	1	STAINLESS STEEL 2 TIER POT RACK OVER	CUSTOM	1200x 400x 30
29	1	STAINLESS STEEL PREWASH TABLE W/BOWL	CUSTOM	1445x 780x 1300
30	1	PRE-WASH SPRAY UNIT SINGLE HOLE	2110-WB	300x 200x 1150
31	1	HOOD TYPE DISHWASHER 1180 P/H	W155	748x 833x 1515
32	1	STAINLESS STEEL DISHWASHER HOOD	CUSTOM	1200x 1200x 400
33	1	DW TABLE UNL/DONOR/LD/01/200MM-HOOD TYPE	CUSTOM	1245x 780x 1200
34	1	STAINLESS STEEL 2 TIER POT RACK OVER	CUSTOM	1200x 400x 30
35	1	STAINLESS STEEL CLEANERS SINK + TAPWARE	CS1	530x 470x 550
Total (Alternative and existing products excluded)				

Electrolux



Scotsman
Ice Makers / Flakers



SIKOPLEX



woodson
WATER COOLING SYSTEMS

